

Helping you find safer and quieter routes for exploring the Black Isle by bike

Transition Black Isle aims to encourage more people to cycle around our beautiful peninsula. Our community mapping endeavours during the *million miles* project have produced several useful tools to highlight safer routes that avoid busier roads.

www.transitionblackisle.org/community-cycle-links.asp

Explore all **thirteen Community Cycle Links** in detail on our **online map and download** the route guides



Black Isle Travel Map

Transition Black Isle published a travel map of the Black Isle in March 2015. The map highlights footpaths, bike-friendly routes, public transport connections and places of interest.



If you live on the Black Isle, you should have received a copy by post. To request a map, please email us: info@transitionblackisle.org

cyclerroutes.transitionblackisle.org

The intelligent bike journey planner that uses **OpenStreetMap** to work out fastest, quietest and balanced route options from A to B

Scan this QR code to visit the **Transition Black Isle website**



KNOW THE CODE BEFORE YOU GO
 SCOTTISH OUTDOOR ACCESS CODE outdooraccess-scotland.com

These Community Cycle Links have been produced by Lachlan McKeeggie and Peter Elbourne as part of Transition Black Isle's Million Miles project. Funded by the Scottish Government's Climate Challenge Fund between 2012 and 2015, the project helped Black Isle households discover the joys of safer, greener, healthier and more sociable ways of travelling.

Black Isle Bicycles
 We deliver the bikes to you!

- Mobile bike hire. We come to you!
- Includes helmet, lock, hi-viz, pump, repair kit
- Mountain bikes, hybrids & e-bikes.
- Route advice for all interests & abilities.
- Guided rides & skills sessions available.
- Mobile maintenance. Let us fix your bike!

www.blackislebicycles.co.uk 07964 779663 info@blackislebicycles.co.uk



Route 8 Culbokie - Munlochy

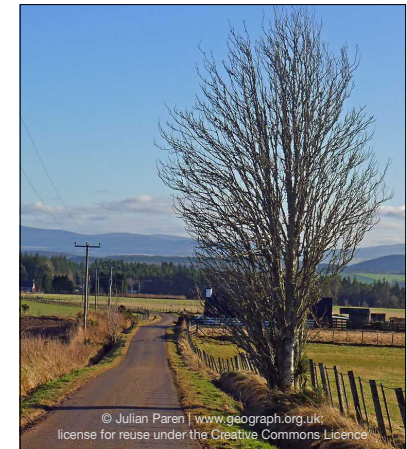
A quiet and scenic route up over the ridge of the Black Isle, leaving Culbokie through woodland before heading down into Munlochy through farmland

25 - 45 minutes

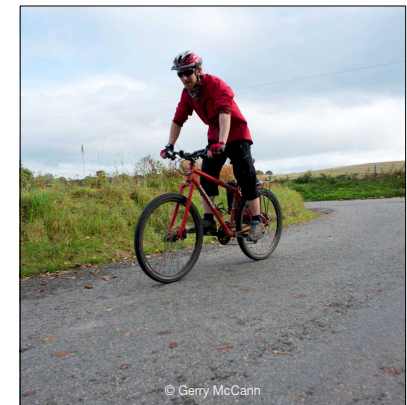
9.5km / 6 miles



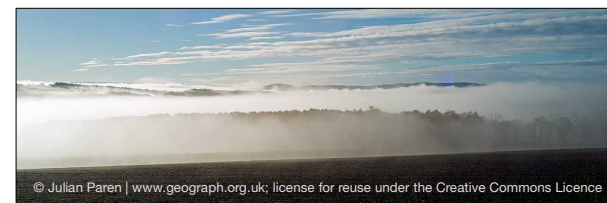
© Gerry McCann



© Julian Paren | www.geograph.org.uk; license for reuse under the Creative Commons Licence



© Gerry McCann



© Julian Paren | www.geograph.org.uk; license for reuse under the Creative Commons Licence

Part of a series of Community Cycle Links highlighting quiet and off-road bike routes around the Black Isle



a million miles better

www.transitionblackisle.org




Culbokie to Munloch via Knockbain

All
on-road

25-40
minutes

6 miles /
9 km

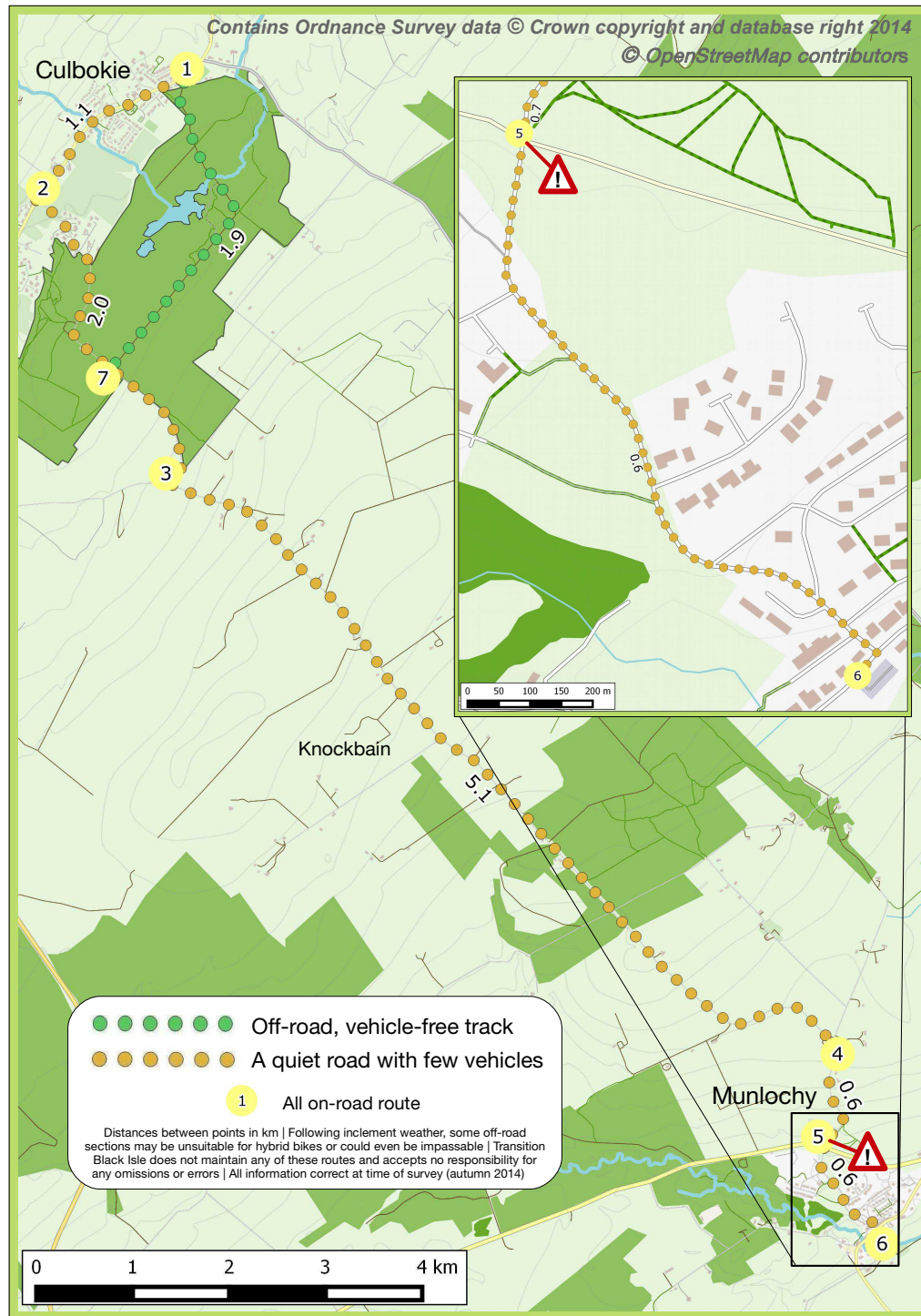
Starting at the car park south of the Culbokie Recreation Ground **1**, turn left and cycle through the village. Turn left at the shop **2**, head up the hill past Smithfield and continue through the woods. At the T junction at the end of the road **3**, turn left up the hill. This road will take you over the hill and round bends towards the other side of the Black Isle.

4 Turn right at the T junction next to the electricity substation and continue down the hill. **5** Cross straight over the main road and cycle into Munloch (take care ). Follow the road round to the left by Hillpark Brae and carry on down to the main road. The village car park **6** is state ahead across the road.

Off-road sections
(suitable for hybrid bikes)

Save around 1km
and 2 minutes

From the car park **1**, take the track on the west side. Follow straight on at the crossroads and continue round a bend to the right. When you meet the road **7**, turn left and follow the route from **3**.



Munloch to Culbokie via Knockbain

All
on-road

30-45
minutes

6 miles /
9 km

6 From the car park in Munloch, head up Station Brae. Cross straight over the A832 **5** (take care ) and cycle up the hill. Turn left just before the electricity substation **4**. Follow this road over the hill and down the other side. **3** Turn right at the unsigned turn with white junction lines as you head down hill. Turn right again at the T junction by the shop **2** and follow through the village. The recreation ground car park **1** is on the right after the school.

 cycleroutes.transitionblackisle.org

The intelligent bike journey planner for the Black Isle that works out three route options to help you decide how to cycle from A to B:

Fastest Quickest route following main roads

Balanced Realistic route for the average cyclist

Quietest Leisurely route avoiding busy roads

Powered by...  OpenStreetMap.org 